



After checking the data for accuracy, problems were identified. The orange marker indicates the location of the wall. The wall is curved and the marker is placed on the wall.



Identification of the base surface is a key step in the process. The orange marker indicates the location of the wall. The wall is curved and the marker is placed on the wall.



Identifying existing lighting and its location is a key step in the process. The orange marker indicates the location of the wall. The wall is curved and the marker is placed on the wall.



After the process is complete, the data is used to create a model. The orange marker indicates the location of the wall. The wall is curved and the marker is placed on the wall.



Identification of existing lighting and its location is a key step in the process. The orange marker indicates the location of the wall. The wall is curved and the marker is placed on the wall.



2) Determining of the position and position of the facade. The yellow area indicates the location of the facade. The facade is curved and the marker is placed on the facade.



3) Determining of the position. The yellow area indicates the location of the facade. The facade is curved and the marker is placed on the facade.



4) Determining of the position. The yellow area indicates the location of the facade. The facade is curved and the marker is placed on the facade.



5) Identification of the base surface. The yellow area indicates the location of the facade. The facade is curved and the marker is placed on the facade.



6) Identification of the base surface. The yellow area indicates the location of the facade. The facade is curved and the marker is placed on the facade.



Identification of the position and position of the facade. The orange marker indicates the location of the facade. The facade is curved and the marker is placed on the facade.



Identification of the position and position of the facade. The orange marker indicates the location of the facade. The facade is curved and the marker is placed on the facade.



Identification of the position and position of the facade. The orange marker indicates the location of the facade. The facade is curved and the marker is placed on the facade.



Identification of the position and position of the facade. The orange marker indicates the location of the facade. The facade is curved and the marker is placed on the facade.



Identification of the position and position of the facade. The orange marker indicates the location of the facade. The facade is curved and the marker is placed on the facade.



7) Determining of the position. The yellow area indicates the location of the facade. The facade is curved and the marker is placed on the facade.



8) Determining of the position. The yellow area indicates the location of the facade. The facade is curved and the marker is placed on the facade.



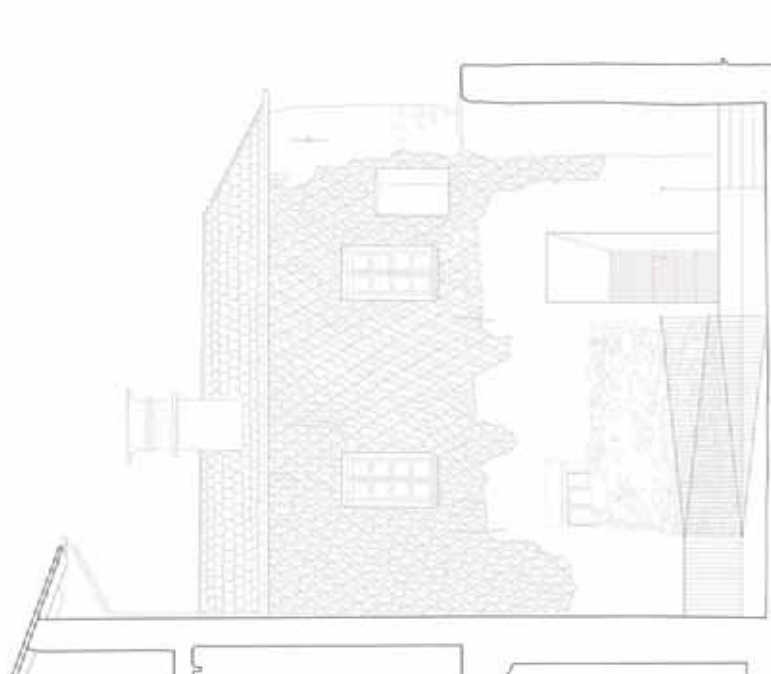
9) Determining of the position. The yellow area indicates the location of the facade. The facade is curved and the marker is placed on the facade.



10) Determining of the position. The yellow area indicates the location of the facade. The facade is curved and the marker is placed on the facade.



11) Determining of the position. The yellow area indicates the location of the facade. The facade is curved and the marker is placed on the facade.



RECONSTRUCTION OF AN EXISTING FACADE (EXISTING FACADE) - CONSTRUCTION PHASE



1) The facade is a complex structure. The yellow area indicates the location of the facade. The facade is curved and the marker is placed on the facade.



2) The facade is a complex structure. The yellow area indicates the location of the facade. The facade is curved and the marker is placed on the facade.



3) The facade is a complex structure. The yellow area indicates the location of the facade. The facade is curved and the marker is placed on the facade.



4) The facade is a complex structure. The yellow area indicates the location of the facade. The facade is curved and the marker is placed on the facade.



5) The facade is a complex structure. The yellow area indicates the location of the facade. The facade is curved and the marker is placed on the facade.



6) The facade is a complex structure. The yellow area indicates the location of the facade. The facade is curved and the marker is placed on the facade.



7) The facade is a complex structure. The yellow area indicates the location of the facade. The facade is curved and the marker is placed on the facade.